

INIGO

PROPERTY NAME

Ospringe Road

LOCATION

London NW5

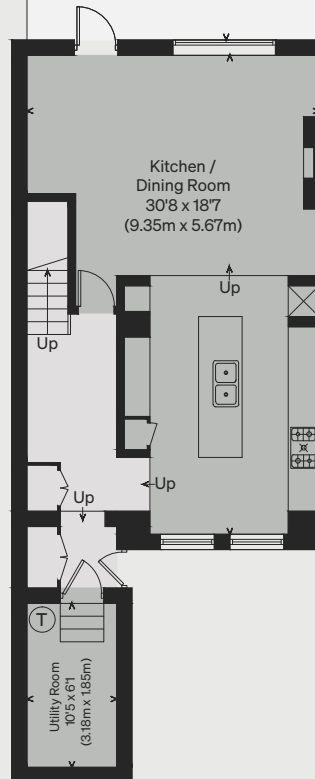
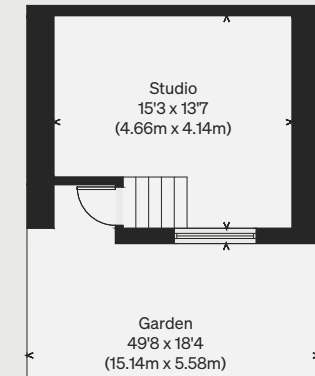
Approximate Floor Area = 256.4 sq m / 2760 sq ft

Studio = 17.9 sq m / 193 sq ft

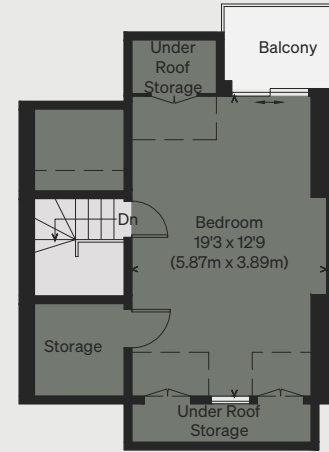
Total = 274.3 sq m / 2953 sq ft

Including Limited Use Area (11.3 sq m / 122 sq ft)

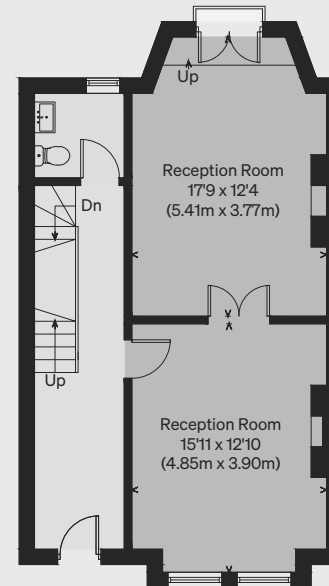
*Illustration for identification purposes only,
measurements are approximate, not to scale*



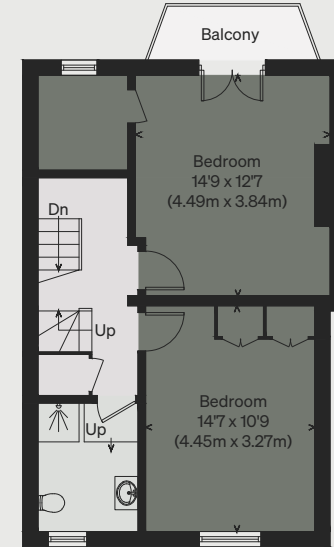
LOWER GROUND FLOOR



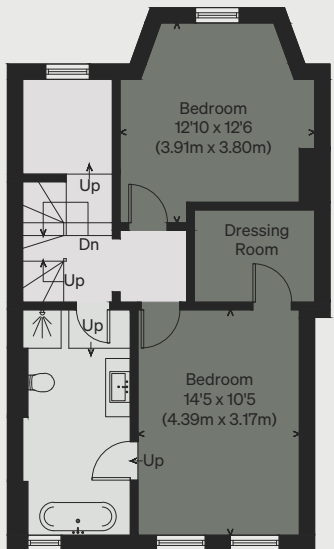
THIRD FLOOR



GROUND FLOOR



SECOND FLOOR



FIRST FLOOR