



PROPERTY NAME

Lynn Road

LOCATION

Ingoldisthorpe, Norfolk

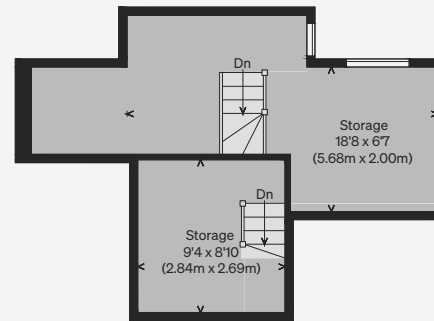
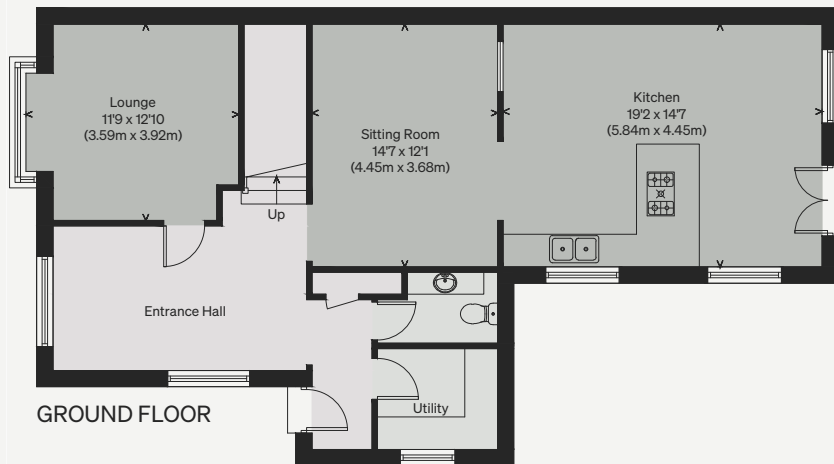
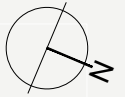
Approximate Floor Area = 136.0 sq m / 1463 sq ft

Storage = 19 sq m / 205 sq ft

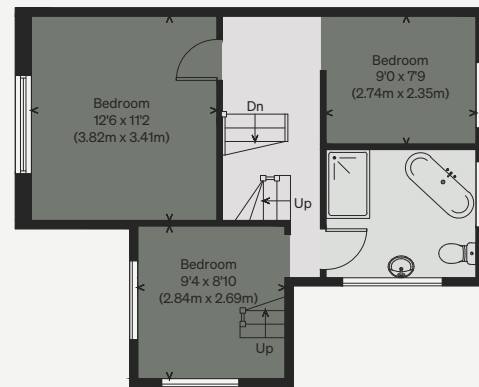
Garage / Workshop = 48.1 sq m / 518 sq ft

Total = 203.1 sq m / 2186 sq ft

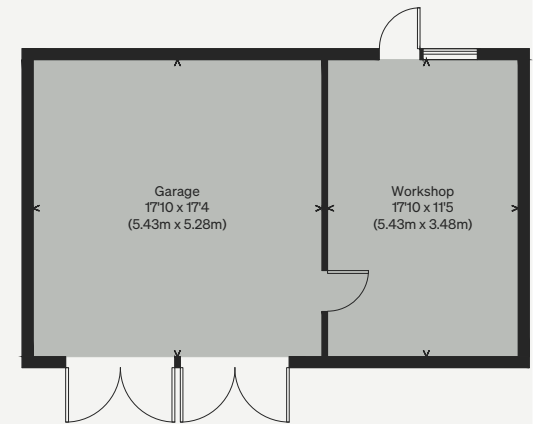
*Illustration for identification purposes only, measurements are approximate, not to scale*



SECOND FLOOR



FIRST FLOOR



(Not Shown In Actual Location / Orientation)