

# INIGO

PROPERTY NAME

Oxberry Avenue

LOCATION

London SW6

Approximate Floor Area = 64.2 sq m / 691 sq ft

Basement = 13.9 sq m / 150 sq ft

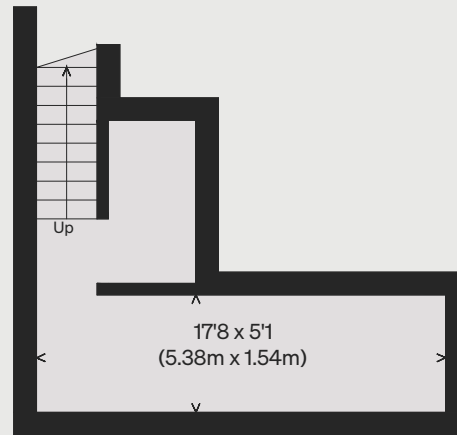
Total = 78.1 sq m / 841 sq ft

*Illustration for identification purposes only,  
measurements are approximate, not to scale*

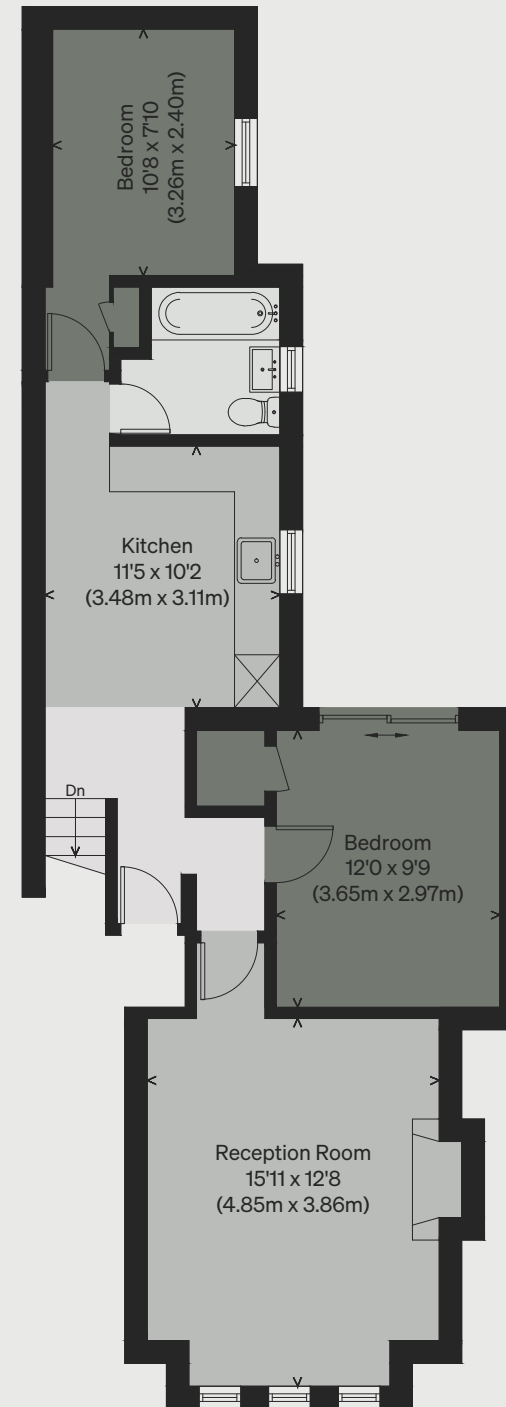
*Viewing Arrangements*

Telephone: +44 (0)20 3687 3071

Email: [viewings@inigo.com](mailto:viewings@inigo.com)



BASEMENT



GROUND FLOOR

