



PROPERTY NAME
Tyrwhitt Road

LOCATION
London SE4

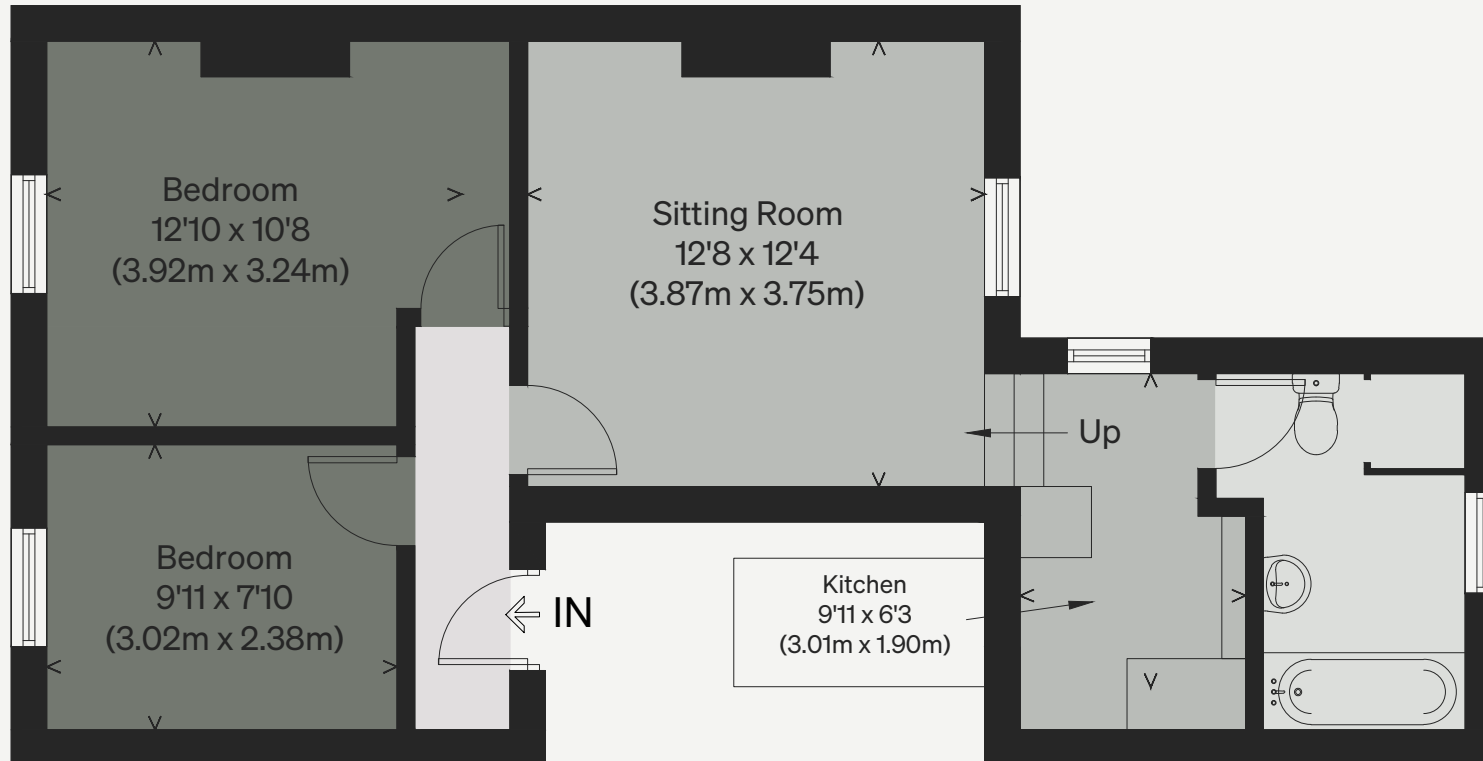
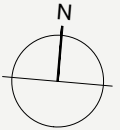
Approximate Floor Area = 49.2 sq m / 529 sq ft

Illustration for identification purposes only, measurements are approximate, not to scale

Viewing Arrangements

Telephone: +44 (0)20 3687 3071

Email: viewings@inigo.com



FIRST FLOOR