



PROPERTY NAME

Kennington Park Road

LOCATION

London SE11

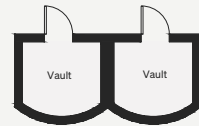
Approximate Floor Area = 357.2 sq m / 3845 sq ft

*Illustration for identification purposes only, measurements are approximate, not to scale*

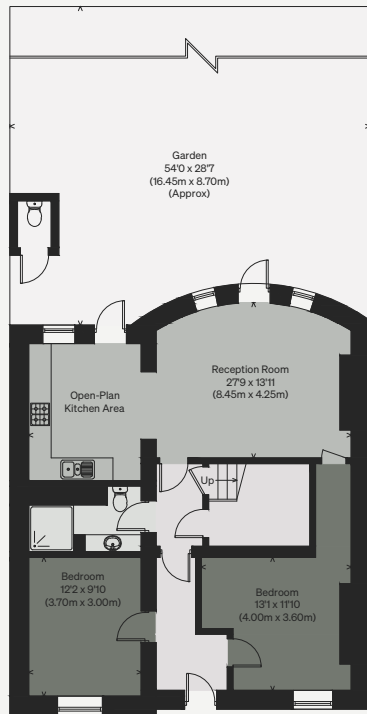
Viewing Arrangements

Telephone: +44 (0)20 3687 3071

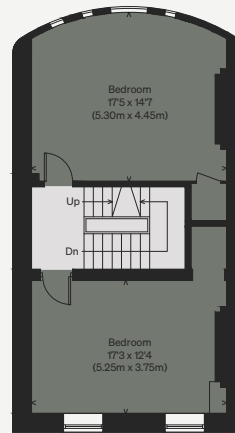
Email: viewings@inigo.com



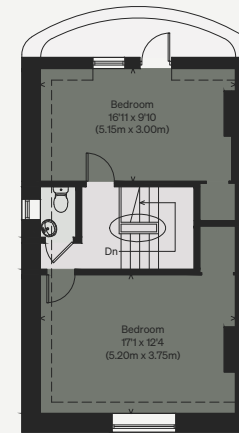
(Not Shown In Actual Location / Orientation)



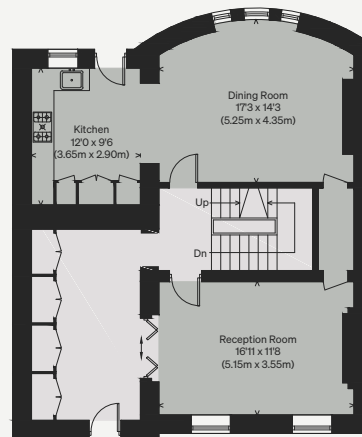
LOWER GROUND FLOOR



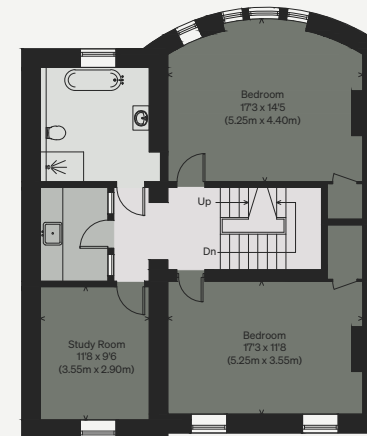
SECOND FLOOR



THIRD FLOOR



GROUND FLOOR



FIRST FLOOR

