

INIGO

PROPERTY NAME

Mortimer Road

LOCATION

London N1


Approximate Floor Area = 47.0 sq m / 506 sq ft

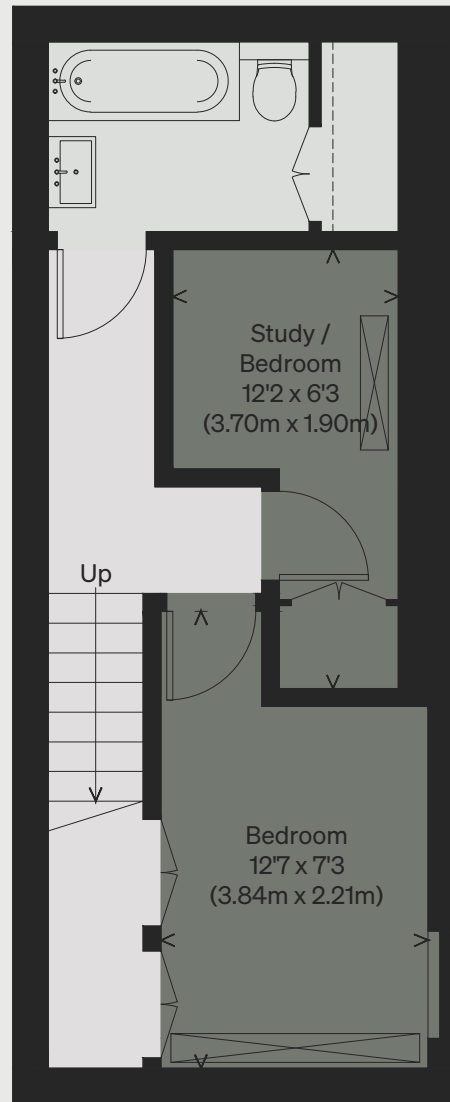
*Illustration for identification purposes only,
measurements are approximate, not to scale*

Viewing Arrangements

Telephone: +44 (0)20 3687 3071

Email: viewings@inigo.com

 = Reduced head height below 1.5m



BASEMENT



GROUND FLOOR